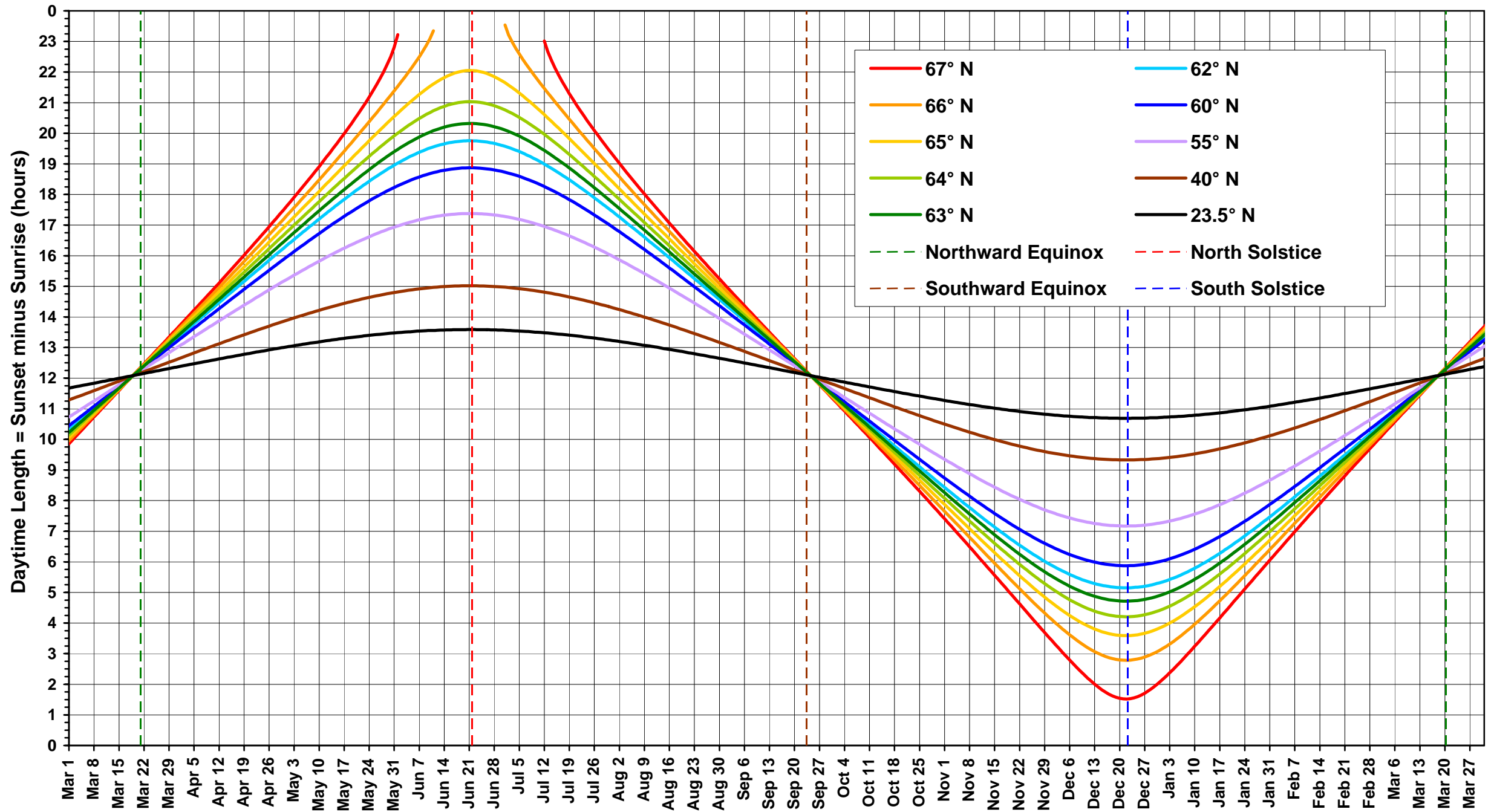
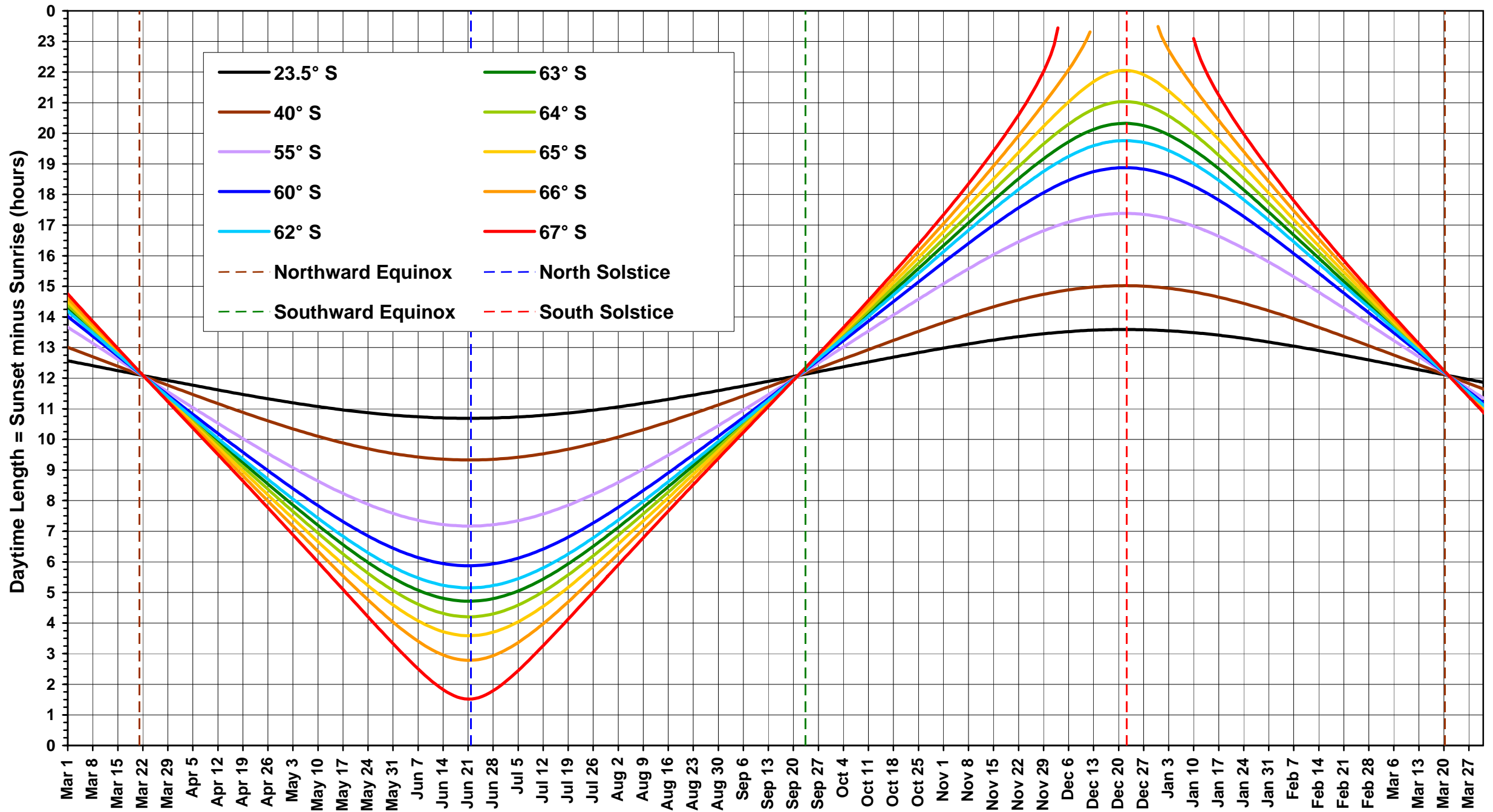


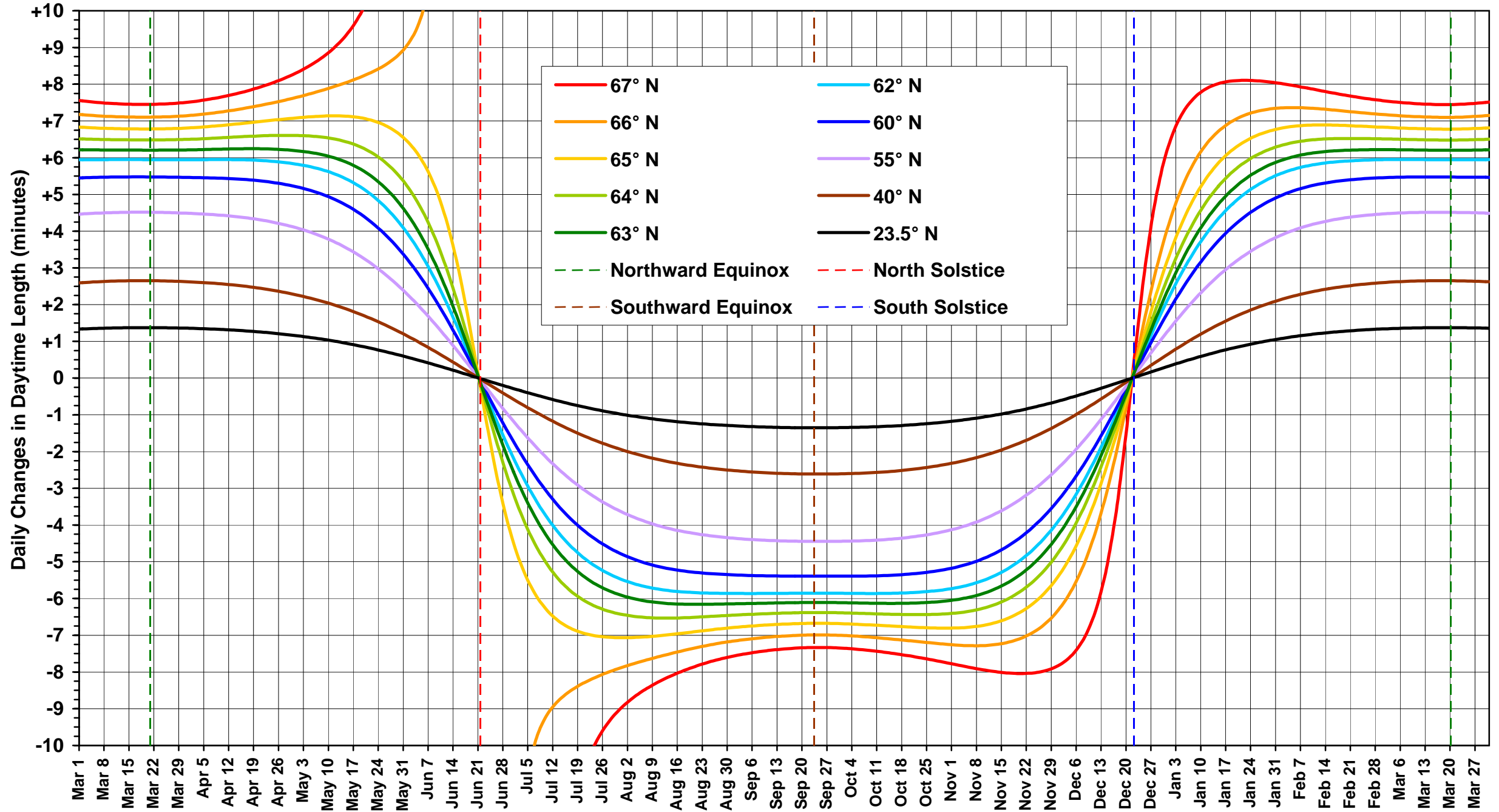
Northern Hemisphere Daytime Length at the Prime Meridian, Sea Level (March 1, 2007 to March 31, 2008)



Southern Hemisphere Daytime Length at the Prime Meridian, Sea Level (March 1, 2007 to March 31, 2008)



Northern Hemisphere Daily Change in Daytime Length at the Prime Meridian, Sea Level (March 1, 2007 to March 31, 2008)



Southern Hemisphere Daily Change in Daytime Length at the Prime Meridian, Sea Level (March 1, 2007 to March 31, 2008)

