

Disclaimer

The author of this document shall not carry responsibility for any damage to the computer software or hardware either direct or indirect as a result of following the instructions herein.

Introduction

When upgrade to or re-install **“Open Text HostExplorer 14”** for Windows, a user may lose the keyboard mapping to the keypad and to some other keyboard keys if they setup one from before.

When clean install **“Open Text HostExplorer 14”** for Windows for a new user, the user may wish to map the keypad and/or other keyboard keys differently than the factory default Open Text HostExplorer fresh installation functions set.

This document covers keyboard mapping under **“Open Text HostExplorer 14”** but may be useful for later versions if menu and keyboard options remain unchanged.

This document is intended for I.T. Professionals who are assisting their users to upgrade, re-install, or performing a new install to **“Open Text HostExplorer 14”** for Windows. However, other users may find this document useful and straight forward to follow.

Some files and folders are hidden by default. You may toggle to **“Show hidden files, folders, and drives”** temporary until job is complete. Please remember toggling this option back to **“Don’t show hidden files, folders, or drives”**. Figure 1 illustrates how to accomplish this task on Windows 7 | **Computer** | **Organize** | **Folder and search options**:

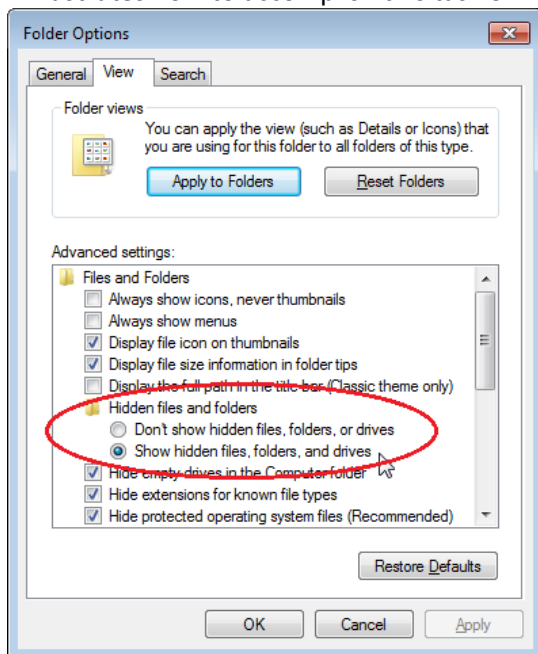


Figure 1

This document covers the following topics:

- For an existing user:
 - o Backing up a user’s keyboard mapping profile before an upgrade or re-install
 - o Restoring a user’s keyboard mapping profile after an upgrade or re-install
- For a new user:
 - o Steps on how to map keyboard keys for a new user

Brief

For an existing user:

- Locate the path where the keyboard mapping profiles are stored
 - Locate the keyboard mapping profile corresponding to the user
 - Make a backup copy of the user's keyboard mapping profile on a different location
 - Restore the user's keyboard mapping profile after upgrade or re-install is complete
- Note:** Some users may have multiple keyboard mapping profiles. Locate and make backup copy of all keyboard mapping profiles corresponding to the user

For a new user:

- Install Open Text HostExplorer 14 for Windows *//not covered by this document*
- Install the required service pack(s) if any *//not covered by this document*
- Install the required hot fix(es) if any *//not covered by this document*
- Create an Open Text HostExplorer session if instructed to *//not covered by this document*
- Start the appropriate Open Text HostExplorer session
- From the menu options start keyboard mapping
- Save changes

Procedure

For an existing user:

The following path is where user's and other program keyboard mapping profiles are stored:

C:\Users**UserID**\AppData\Roaming\Hummingbird\Connectivity\14.00\HostExplorer\Keymap\

For example:

C:\Users\smithjoh\AppData\Roaming\Hummingbird\Connectivity\14.00\HostExplorer\Keymap\John.km3

1. Before an upgrade or re-install, make a backup copy of the user's keyboard mapping profile to a different location
2. After upgrade or re-install is complete, restore the user keyboard mapping profile back into the same location
3. After creating the appropriate Open Text HostExplorer session, open this session by selection the session name then click **"Connect"**. Figure 2 illustrates an example of a new **"eToken"** session to connect to:

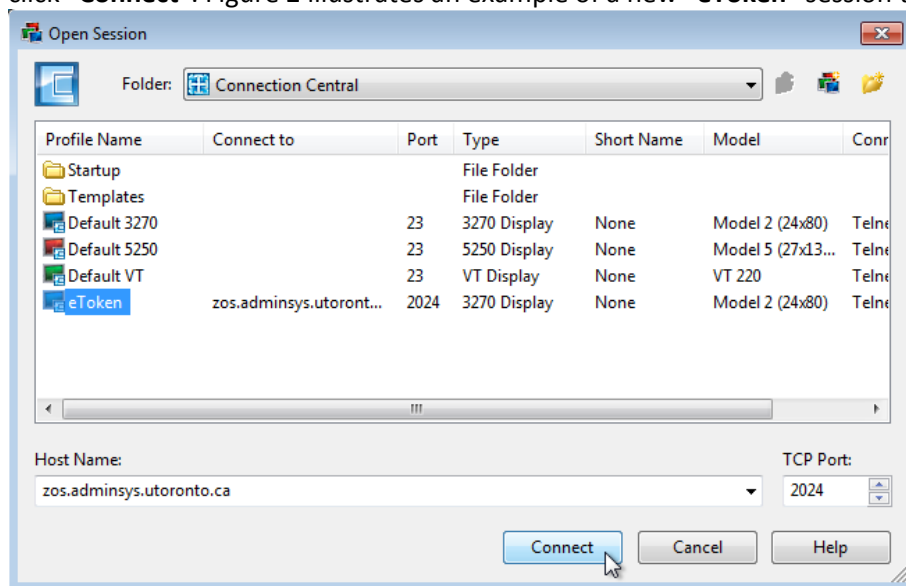


Figure 2

4. The session window appears. Select **"No"** if prompted by the unsecure connection warning popup window:

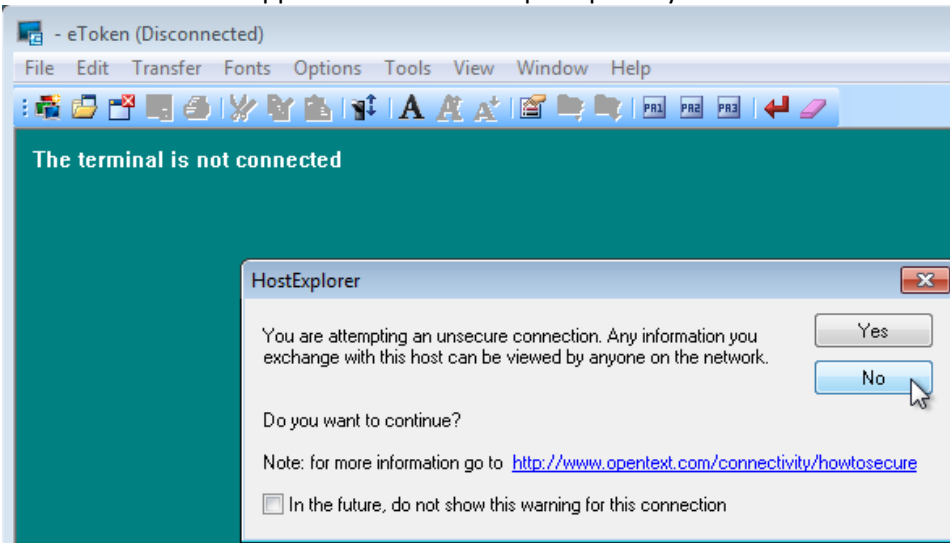


Figure 3

5. From the menu bar select **"Options"** then select **"Keyboard Mapping"**:

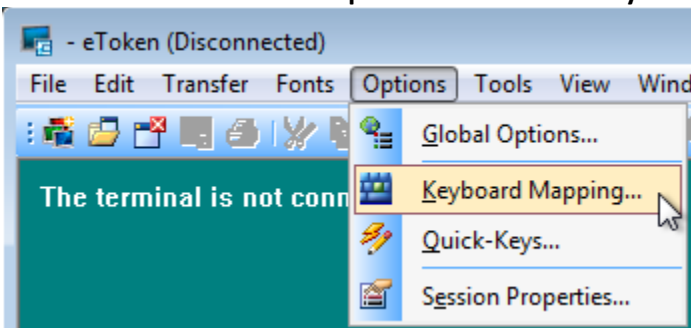


Figure 4

6. The **"Keyboard Map"** window appears. In this window click the **"Load"** button

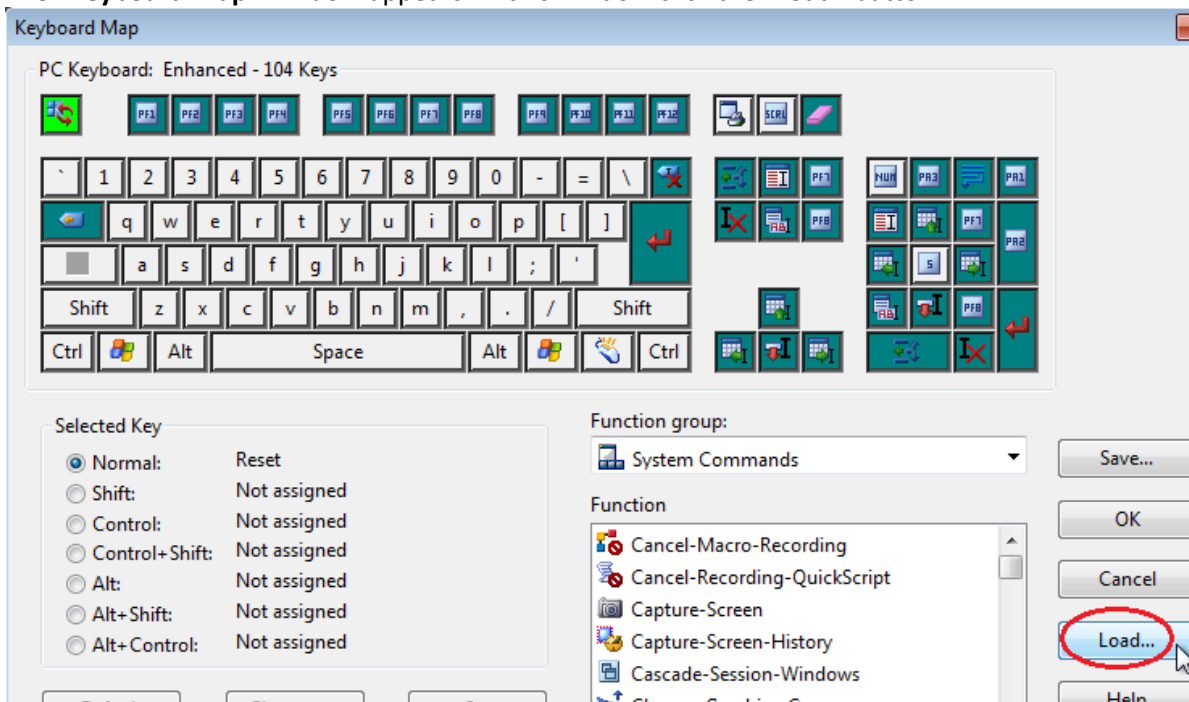


Figure 5

7. The **“Load Keymap”** window appears. In this window locate and select the user keyboard mapping profile then click **“OK”**

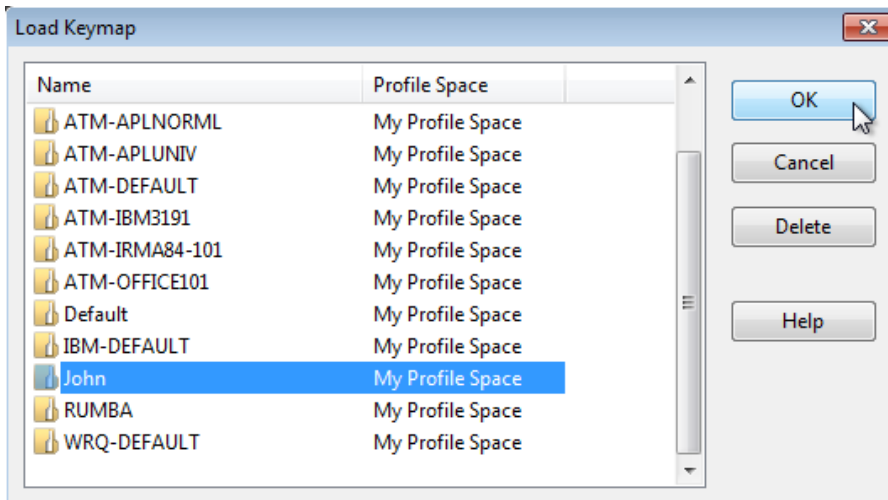


Figure 6

8. Finally, click the **“OK”** button to exit the **“Keyboard Map”** window

For a new user:

1. Start your Open Text HostExplorer session by simply selecting the session name then pressing the **“Connect”** button:

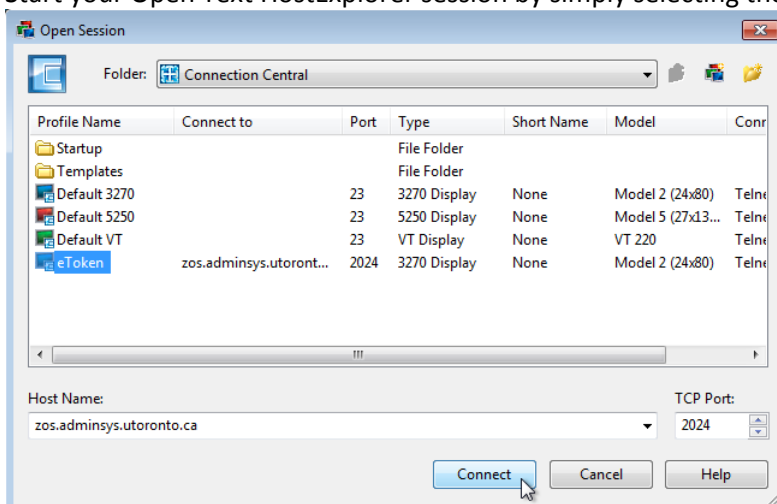


Figure 7

2. Select **“No”** if prompted by the unsecure connection warning popup window:

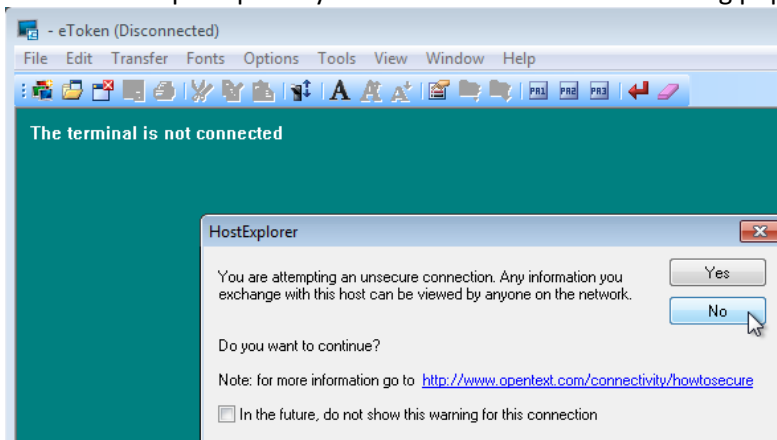


Figure 8

- From the menu bar select “Options” then “Keyboard Mapping”:

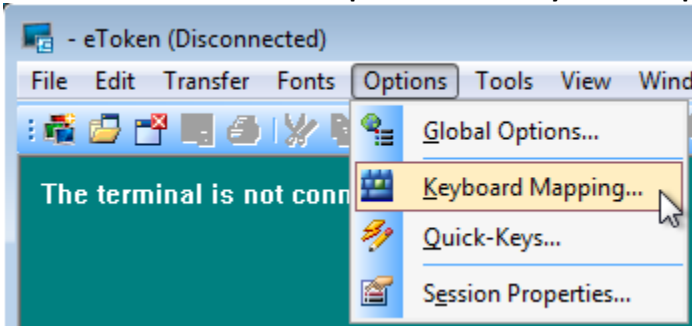


Figure 9

- The “Keyboard Map” window appears:

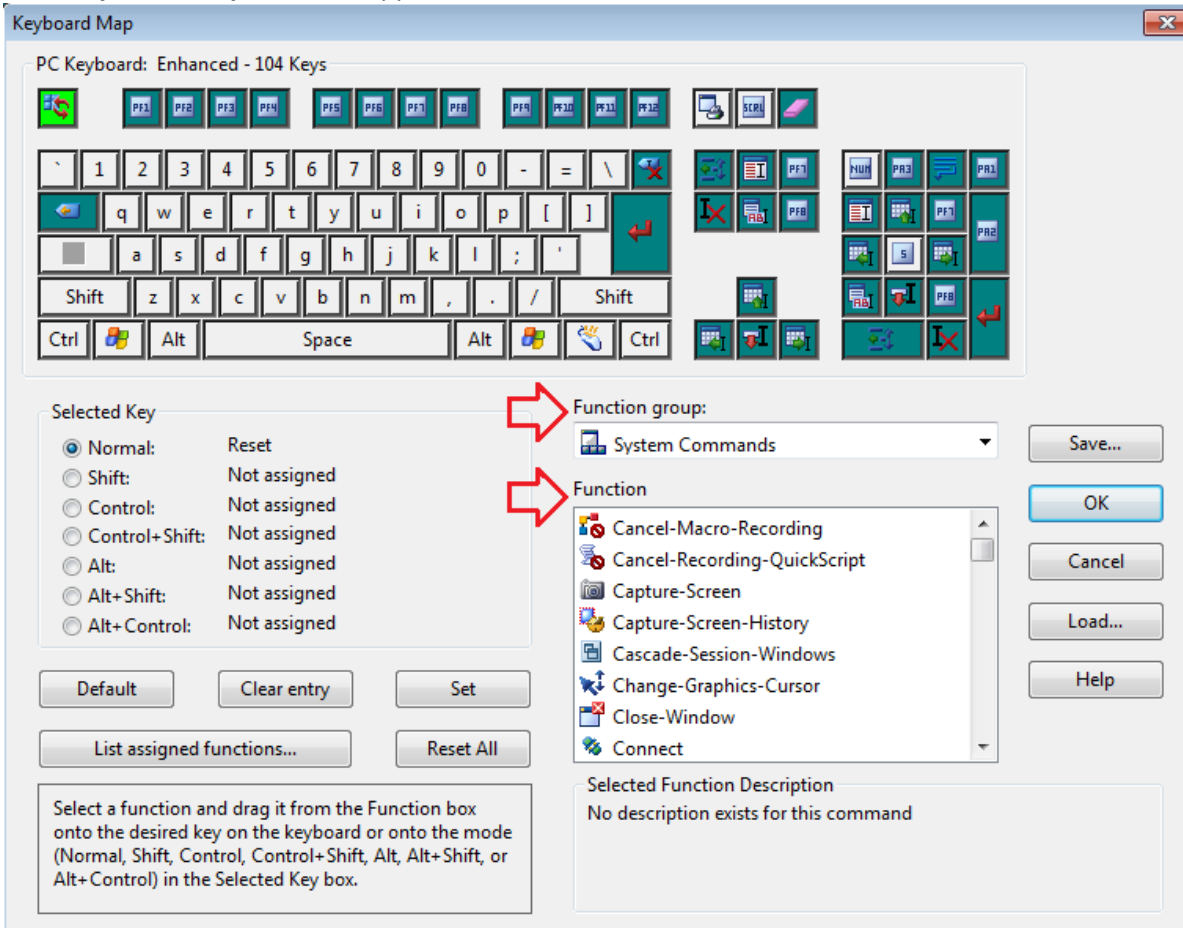


Figure 10

- In the “Keyboard Map” window, under “Function group:” drop down menu select the desired group function.
Note: The “Editing Keys” and “Characters” groups may be sufficient for most users
- Select your desired Function group for example “Characters”, then under “Function” scroll down to the desired function and simply drag it over the corresponding keyboard key on the keyboard layout
- As an example, the following functions from the “Function group | Characters” can be used to replace some of the keypad factory default configuration to type numbers instead:

'0'	(48, 0x30)	'1'	(49, 0x31)	'2'	(50, 0x32)	'3'	(51, 0x33)	'4'	(52, 0x34)	'6'	(54, 0x36)
'7'	(55, 0x37)	'8'	(56, 0x38)	'9'	(57, 0x39)						

Figure 11 illustrates the keyboard layout BEFORE the changes
 Figure 12 illustrates the keyboard layout AFTER some changes on the keypad

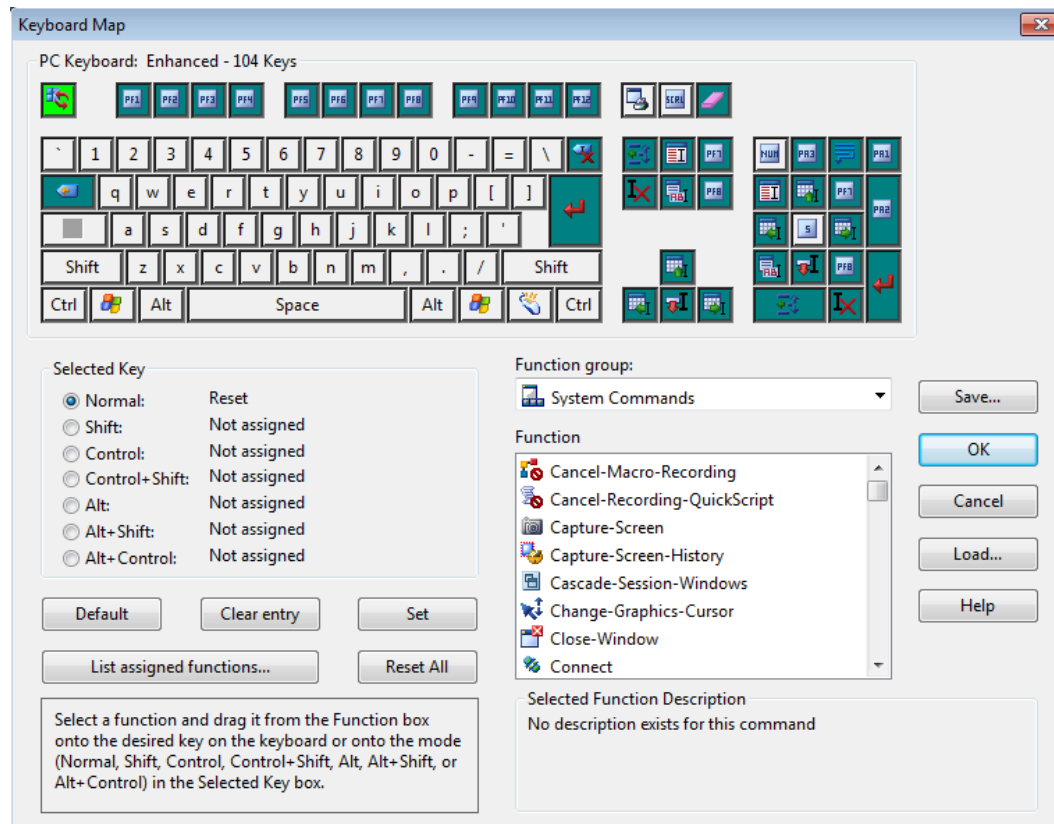


Figure 11

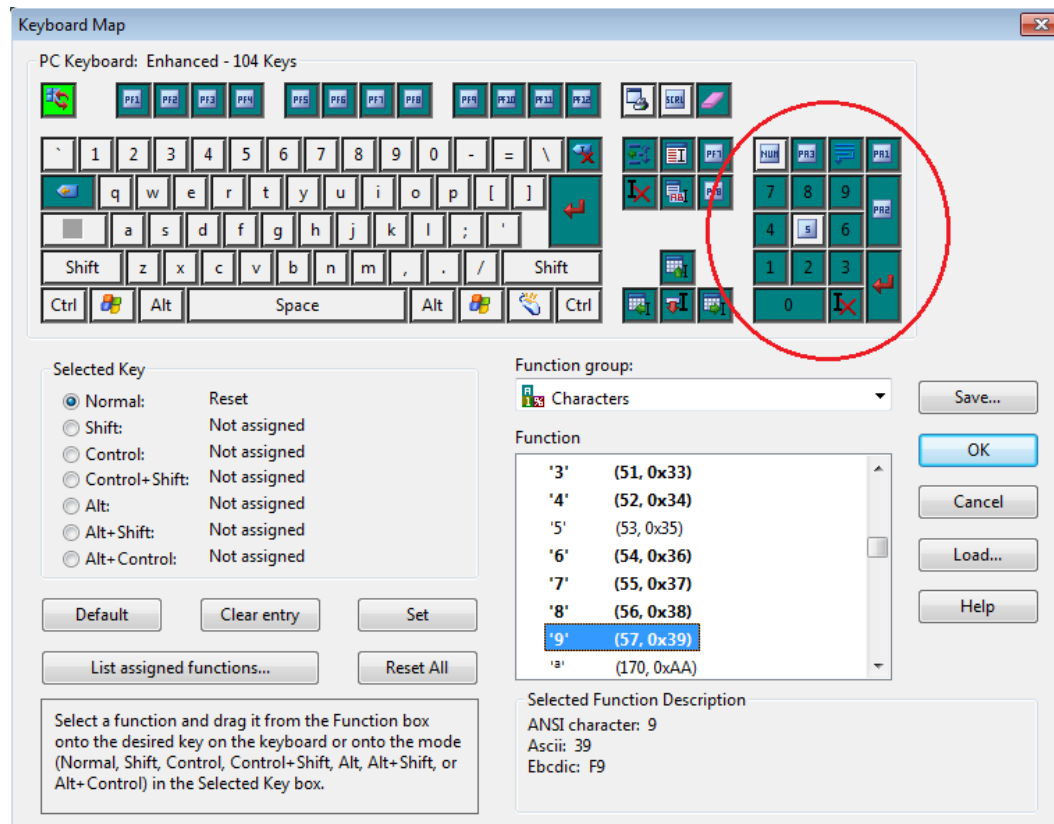


Figure 12

8. When complete, click the **“Save”** button, enter a profile name, and then click the **“OK”** button:

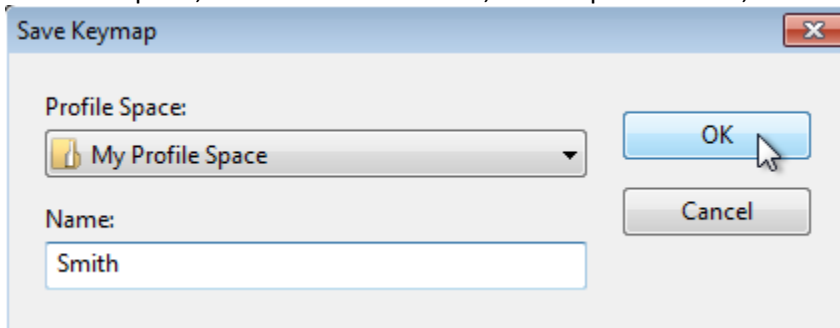


Figure 13

9. Click the **“OK”** button to exit the **“Keyboard map”** window

End of document.